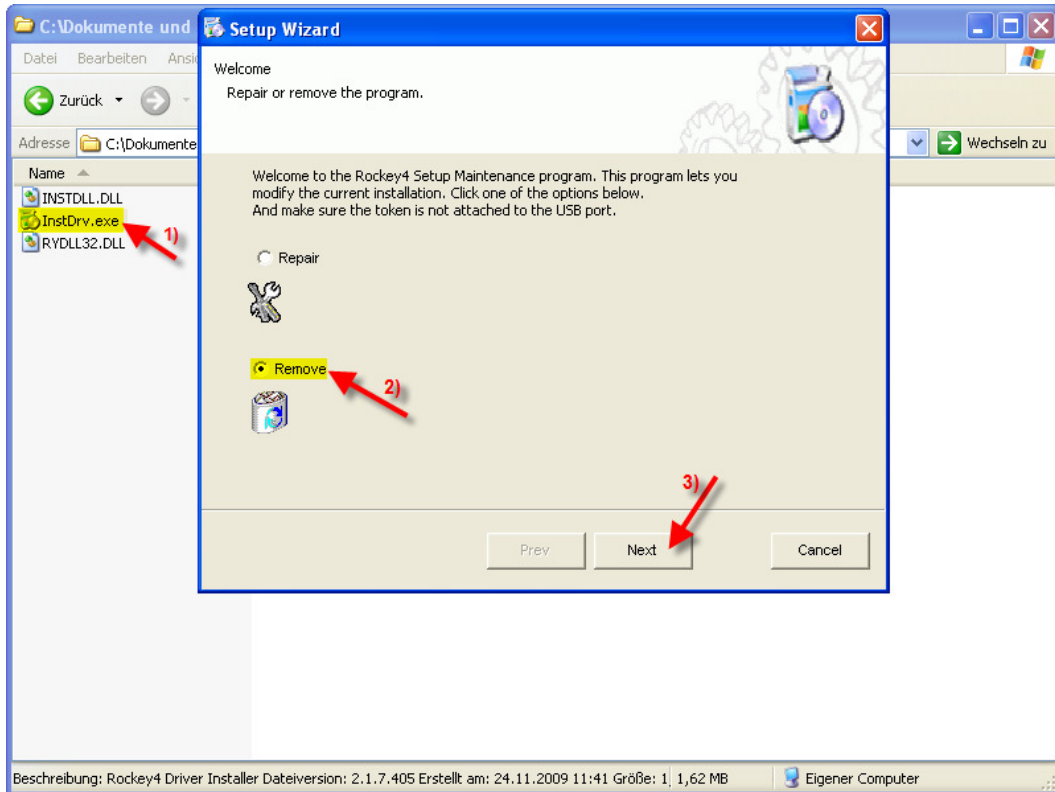


How to install the MediaLas Mamba Dongle key to Microsoft Vista / Windows7 including the latest updates

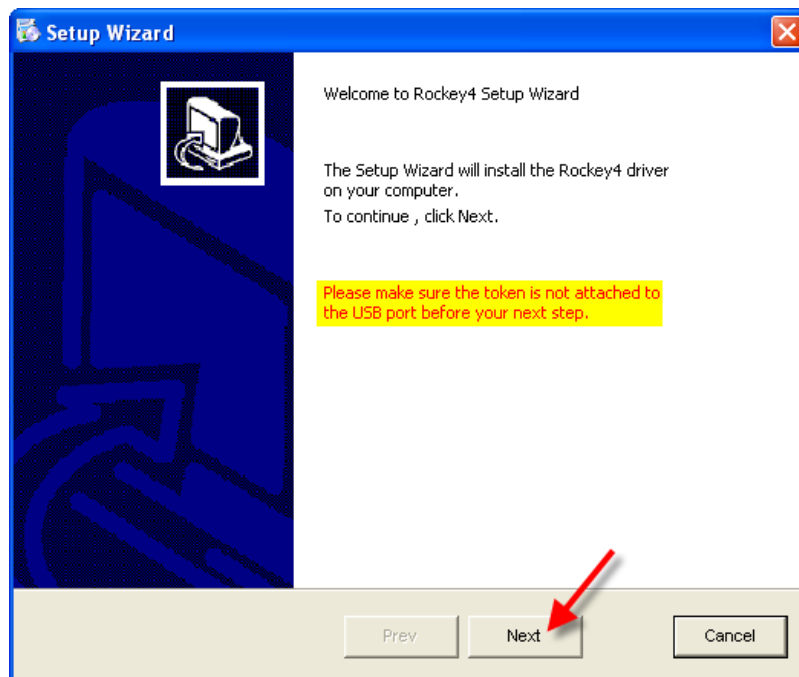
First step:

Please unplug the dongle, then run the InstDrv.exe program. You can find it in the dongle driver section of your mamba installation directory. Use this tool to remove the installed dongle driver. After that, please reboot your system.



Second step:

After the reboot, please run InstDrv.exe again and press the “next” button.



Third step:

This is the last step of the installation. Please select both checkboxes as displayed below and select “Detect the print-busy-mode”, then click next.

After a final reboot, it is now time to plug in your dongle.
Windows should automatically detect and configure it properly now.

